

Draw Seven Park



Assembly
Square
Mall

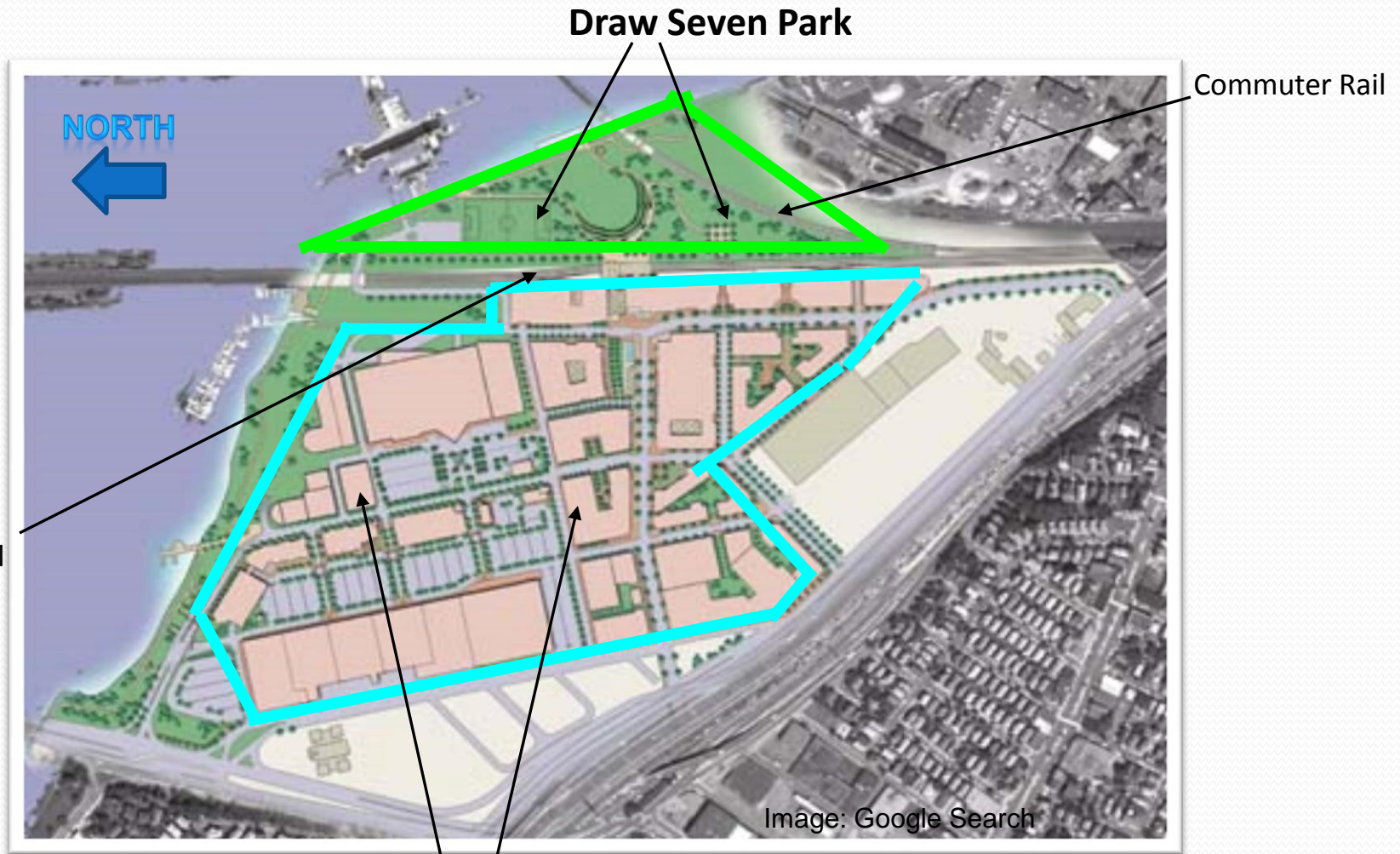
Draw 7
Park

Himanshu Dubey &
Christopher Cumming
EEOS 476
Prof. A. Frankic

Introduction

- Draw Seven Park:
 - Named after a drawbridge of the same name, which once crossed the Mystic River.
 - The park is part of a larger project, the redevelopment of Assembly Square.
 - Assembly Square is located in Somerville within the heart of a shopping plaza, alongside the train tracks of the Orange Line and Haverhill branch of the Commuter Rail. On the other side of the tracks is a narrow triangular strip of land that is Draw Seven Park.
 - This park is bounded by the Orange Line and Haverhill Commuter Rail tracks on the west side, the Mystic River on the northeast side, and the Newburyport/Rockport Commuter Rail tracks on the southeast side.

The Area



**Assembly Square site
of redevelopment**

History

- The mall that currently exists was originally the Ford Plant, which transformed into a supermarket distribution center before being converted into the mall.
- The Assembly Square Mall is built in the area where the following buildings used to exist:
 - East Somerville Locomotive Shop at 99 Foley Street
 - Sears Roebuck & Company Warehouse at 30-34 Sturtevant Street
 - Spaulding Brick Company warehouse at 123 Foley Street
 - Spaulding Brick Company storage structure at 147 Foley Street
 - A two-story commercial building at 85 Foley Street
 - Three additional warehouses at 100 Sturtevant Street

What is there already?

- The park itself already exists, but it is hidden and does not see many visitors.
- Some of the features that are there include:
 - Amelia Earhart Dam,
 - A pair of soccer goals,
 - An open field,
 - Trees and bushes (a few)
 - Paved pedestrian/bike paths
 - Benches
 - A fire hydrant
 - A CSO pipe
 - A deteriorating dock
 - A pavilion with picnic tables.



Draw Park 7



Objective/Goals

- The priority of site is to give provide the community of Assembly Square and surrounding areas:
 - A recreational site, that will be environmental friendly, accessible, and safe.
 - The site would be transformed into a waterfront park, consisting of park like feature; play fields, water fountains, benches, more trees along side the fences.

Our Approach

- From the beginning, we decided to visit the site during different seasons; mid-winter, and early/mid spring, to observe any variations between different seasons.
- Later we visited the site with Ivey St. John, a person well acquainted with the area and highly active in city meetings regarding the development of the site, and Prof. Anamarija Frankic.
- However, most of our time was spent researching and reviewing documents on the internet and books, about how to clean up rivers of their toxic wastes and samples of waterfront parks.

What can be added?

- Draw 7 Park has great potential and can be improved with various elements:
 - Basketball court
 - New soccer goals
 - Playground for kids
 - Fountain
 - Game warden to prevent illegal fishing
 - Additional points of pedestrian access
 - Garbage and recycling receptacles
 - Improved access to, and quality of, the waterfront

What can be added? (cont.)



The Mystic River Waterfront

- No features exist to attract people to the waterfront.
- The riverbank is ravaged by erosion, sediment, and debris.
- The Amelia Earhart Dam takes up half the bank space..
- A damaged and rusted chainlink fence runs the length of the bank. It currently serves no purpose.
- The Mystic River currently receives lots of untreated storm water runoff.

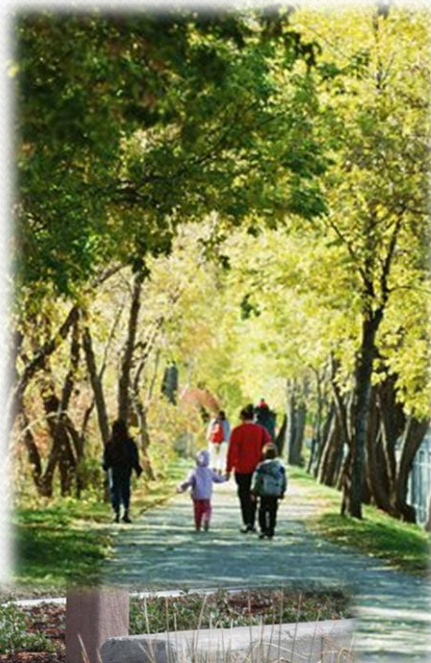
The Waterfront (cont.)



Solutions to the Waterfront

- Creation of salt marshes, and seagrass beds along the shore.
- More trees
- Vegetation to control stormwater runoff
- Places to fish
- Better drainage system to reduce or replace the stormwater runoff into the Mystic River.

Solutions (cont.)

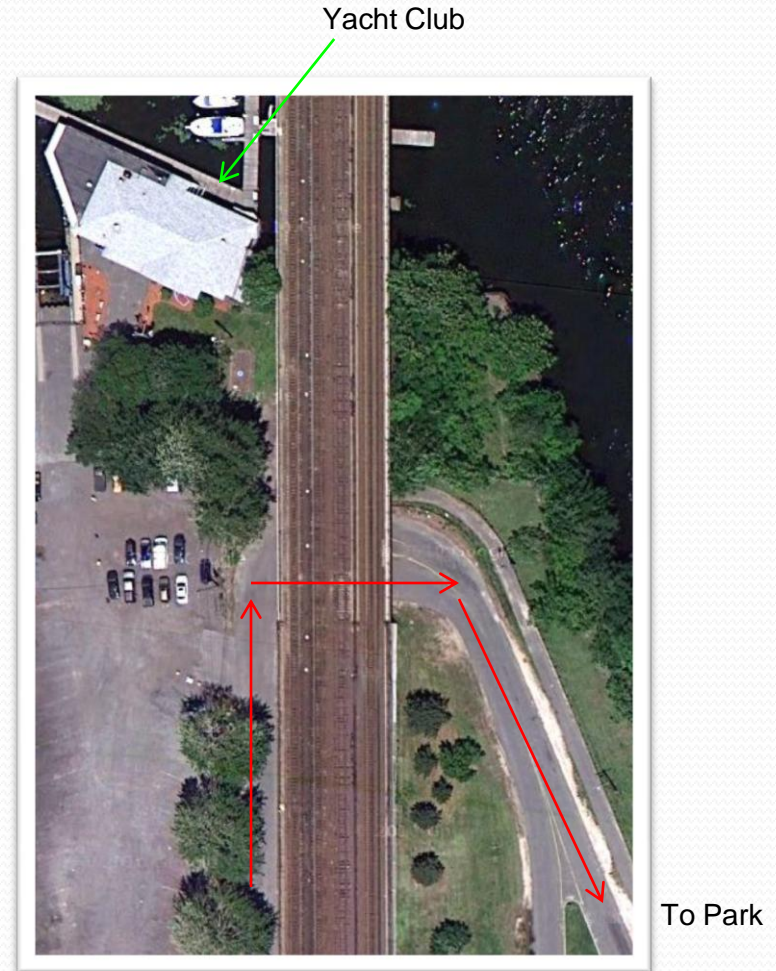


Who will hang out here?

- The recreational fields will attract kids and adults of all ages.
- Parents will be able to bring their children to the playgrounds as well.
- With a better fishing environment, more fishermen will come to fish.
- The redevelopment of Assembly Square will provide an influx of new visitors:
 - Residents
 - Shoppers
 - Commuters on the Orange Line

How do you get there?

- The only way into the park is a hidden access road that crosses under the Orange Line bridge, next to the Winter Hill Yacht Club.
- Even so, it is not the most inviting entrance. It is meant for vehicles for visitors and dam employees.
- The train tracks, lined by fences on either side, act as a barrier between the park and Assembly Square.
- The only good way to see the park is from the train.



New & Improved Access

- There should be a visible footbridge over the tracks to the park. This would reduce pedestrian activity where the cars enter and exit under the bridge. Visibility is poor due to the U-turn leading to the park.
- Assembly Square Station should also have stairs on the other side of the mezzanine, providing direct T access to the park.
- The removal of the boats at the Winter Hill Yacht Club will open up the existing entrance for more space and visibility.

Noise Pollution

- The greatest source of noise pollution comes from the Orange Line trains, which pass frequently.
- This will be a problem for both park visitors on one side, and residents and office workers on the other.
- The loud rumble from trains crossing the bridge is especially loud.
- Commuter trains with loud diesel locomotives pass on either side of the park.



Noise Abatement

- Sound walls could be constructed on either side of the tracks.
- The sound walls would provide a reduction in the noise level.
- Also, transparent sound walls would allow the passengers from trains to enjoy the view of the park and surrounding area.
- The bridge will remain loud to cross under, another important reason for alternative crossings.

Acknowledgement

- We would like to thank:
 - Dr. Anamarija Frankic
 - Ivey St. John,
 - Joel Garner, Fisherman
 - Edward Cumming, Chris's Dad
 - Hung Vo, Himanshu's friend

References

- St John, Ivey. Personal Interview by Himanshu Dubey & Chris Cumming. 20 02 2011. 20 February 2011.
- Garner, Joel. Personal Interview by Himanshu Dubey & Chris Cumming. April 23, 2011. 23 April 2011.
- Mystic River Watershed Association. (2011).Mystic river history . Retrieved from <http://mysticriver.org/history-of-the-mystic/>
- Mysticview Task Force, Initials. (2007). Middlesex avenue - part 2 of 2. Retrieved from http://mysticview.org/walking_tour_middlesex_ave2.php
- City of Somerville, Initials. (2011). Squares and neighborhoods - assembly square . Retrieved from <http://www.somervillema.gov/departments/ospcd/squares-and-neighborhoods/assembly-square>
- Metzger, A. (2011, April 28). Money needed for Somerville's assembly square scrutinized . Retrieved from http://www.wickedlocal.com/somerville/town_info/government/x401816925/Money-needed-for-Somervilles-Assembly-Square-scrutinized#axzz1MXdwyhg4
- Moskovitz, E. (2011, February 13). Assembly square station gets go-ahead, lifting hopes for redevelopment of site into a riverfront complex . Retrieved from http://articles.boston.com/2011-02-13/news/29345290_1_construction-bids-economic-development-station
- "Assembly Square Mixed-Use Redevelopment, Somerville, Massachusetts," Vanasse Hangen Brustlin, Inc., Feb. 28 2007

References (cont.)

- MBTA Bus Routes, Retrieved from <http://web.mit.edu/boojum/www/Map/>
- Memorandum from Felipe Schwarz to Ian A. Bowles, Assembly Square Mixed Use Redevelopment-Somerville, Massachusetts, Feb. 28, 2007
- Memorandum from Wig Zamore to Ivey St. John, "Assembly Square Site Visit and Scoping Session TUESDAY, Mar. 27, 2007
- Center for Watershed Protection, Stormwater Management. Retrieved from <http://www.cwp.org/your-watershed-101/stormwater-management.html>
- Personal on-site conversation with resident named "Bo" on April 4, 2011
- *Inventory of Noise Mitigation Methods*, The European Commission, Directorate-General: Environment, 18 July 2002
- **References**
- Smithsonian Marine Station, . (2002, June 28). Seagrass habitats . Retrieved from http://www.sms.si.edu/irlspec/Seagrass_Habitat.htm<http://www.dnr.sc.gov/marine/pub/seascience/dynamic.html>
- Florida Department of Environmental Protection, . (2010, February 15). Salt Marshes. Retrieved from <http://www.dep.state.fl.us/coastal/habitats/saltmarshes.htm>Taylor,
- Peter. (2003) Salt Marsh Restoration: What Scientists Are Discovering Gulf of Maine Times. Fall 2003; 7 (3), www.gulfofmaine.org/times/fall2003/science_insights.html ([PDF](#))

THE END

